

Extreme Power in a Compact Design  
**SONOACE X6**



# SONOACE X6

Extreme Power in a Compact Design



[www.medison.com](http://www.medison.com) | [marketing@medison.com](mailto:marketing@medison.com)

see it all   
**MEDISON**

CT-X6-ICM-06.30.2008

see it all   
**MEDISON**

# Extreme Power in a Compact Design

MEDISON's SONOACE X6 is an impressive new compact ultrasound system providing maximum value and quality across a wide range of applications. The slender ergonomic design is built upon innovative digital beam forming process in combination with a variety of advanced imaging functions to meet the acceptance of the most sophisticated of ultrasound users.

SONOACE X6 boasts sensitive spectral, color and power Doppler facilitating confident hemodynamic diagnoses of vascular anatomy and pathology. In addition to exceptional Doppler sensitivity, SONOACE X6 also incorporates an extensive list of image processing innovations, including SRF™ (Speckle Reduction Filter), Full Spectrum Imaging™, and Pulse Inversion Harmonic Imaging.

The slender design and elegant style of SONOACE X6 is refined yet resilient, ready to meet the needs of the most vigorous of scanning schedules. The swivel and tilt 15-inch LCD monitor and intuitive console layout provide a diagnostic environment that is comfortable and efficient. For additional convenience SONOACE X6 also features 4 probe ports, and 4 swivel wheels.

SONOACE  
**X6**



# Powerful Imaging



MEDISON's world renowned digital beam forming technology is incorporated into the slender contour of the SONOACE X6. Utilizing sophisticated multi-beam processing in combination with advanced digital beamforming technologies SONOACE X6 yields consistent high resolution imaging for a wide range of clinical applications.

Core imaging technologies that were previously only available in the high-end ultrasound systems have migrated to the SONOACE X6. Users who demand only the best performance and highest image quality will have their demands meet.

SONOACE X6 also offers a comprehensive selection of electronic probes for a wide range of applications including OB/Gyn, abdomen, pediatric, musculoskeletal and cardiovascular.

## **FSI™ (Full Spectrum Imaging)**

Effective utilization of the entire range of probe frequencies allows MEDISON to attain superior image quality throughout the field of view. FSI™ incorporates the penetration capabilities associated with lower frequencies, yet maintains the fine pixel uniformity associated with higher frequencies to deliver consistent high quality images on even the most challenging of patients.

## **SRF™ (Speckle Reduction Filter)**

Utilizing sophisticated digital filtering technologies, SRF™ enhances image quality by reducing and or eliminating the appearance of speckle echoes from the displayed ultrasound image. The degree of speckle reduction implemented is user-selectable.

## **Harmonic Imaging / Pulse Inversion Harmonic Imaging**

SONOACE X6 supports both Tissue Harmonic Imaging and Pulse Inversion Harmonics. Sophisticated probe technology and advanced processing capabilities provide efficient utilization of the received harmonic signals resulting in superb image quality.

## **Trapezoidal Imaging**

With the simple press of a button, the conventional linear probe display widens delivering approximately 20% more clinical information; excellent for breast and thyroid examinations.

## **QuickScan™: Auto Image Optimization**

Advanced recognition software allows the SONOACE X6 to automatically optimize the displayed grayscale image with the simple push of a button. Also, it automatically adjusts the baseline and scale of the Doppler spectrum for more efficient Doppler interaction. QuickScan™ delivers optimal image quality while decreasing the need for excessive parameter adjustments.

# Compact Design



SONOACE X6 has all the functionality and extended features necessary to accomplish efficient and effective diagnoses, packed in a slim and compact designed housing. Its light and mobile design enables users to perform quick and precise diagnosis whenever and wherever. Its innovative software enables user to boot up the system fast with its standby mode and the system has an excellent fast response time which enables the user to operate the system remarkably efficient. The High resolution LCD monitor combined with the precise articulating arm and the excellent diagnostic features together with the precise and easy operations makes the SONOACE X6 is the most valuable ultrasound system in its class suitable for all applications.



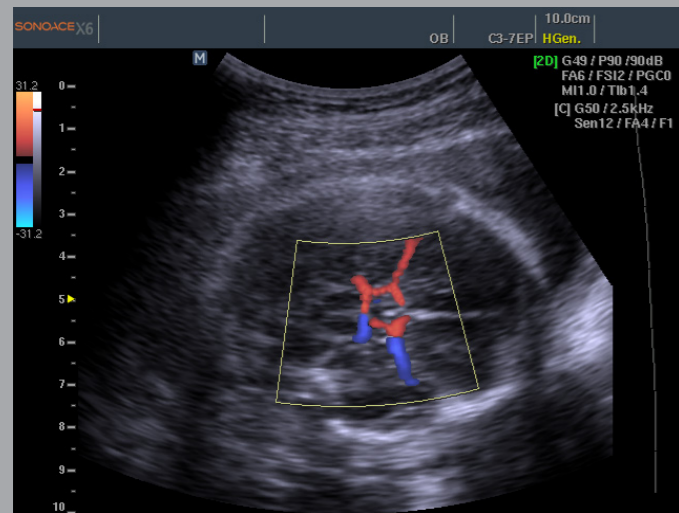
## Full-Featured Workflow

- Shortcut and functional key groupings
- Standby mode for rapid boot-up
- Thumbnail menu
- DICOM 3.0 compatible image filing
- QuickScan™
- Cine Save

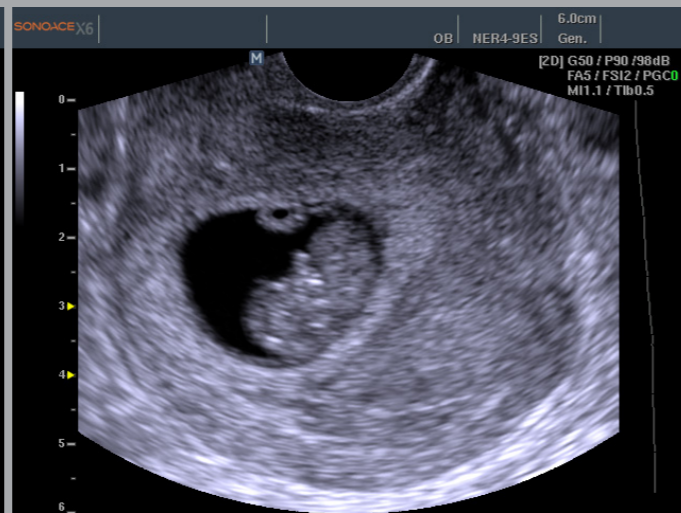
## Optimized System Architecture

- Compact design for high maneuverability
- 4 wheel swivel
- Tilt & swivel 15 inch LCD monitor
- 4 probe ports
- Front and rear handle

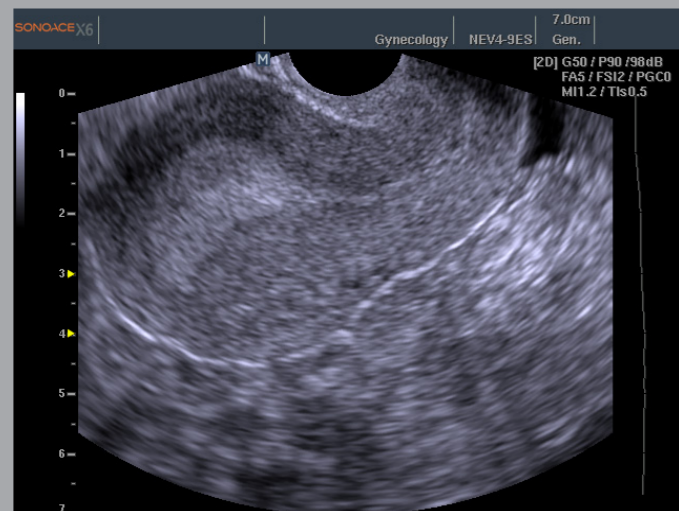




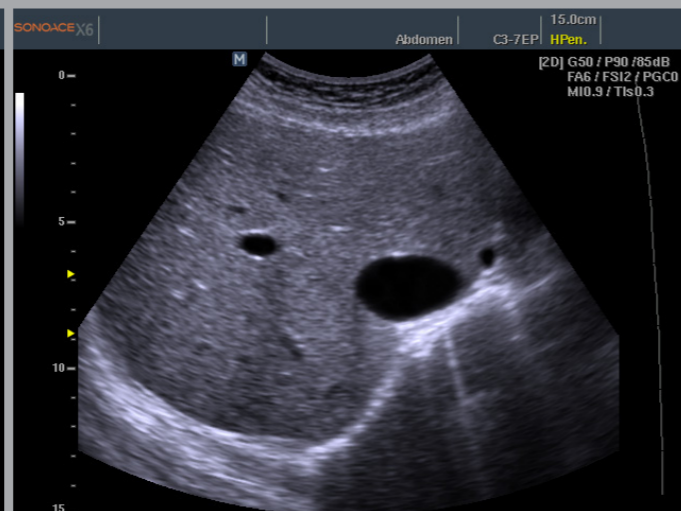
Circle of Willis with Color Doppler



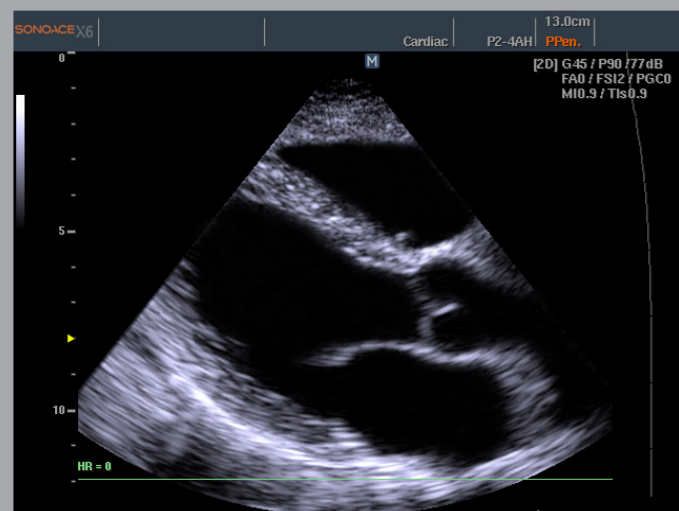
8weeks fetus in 2D



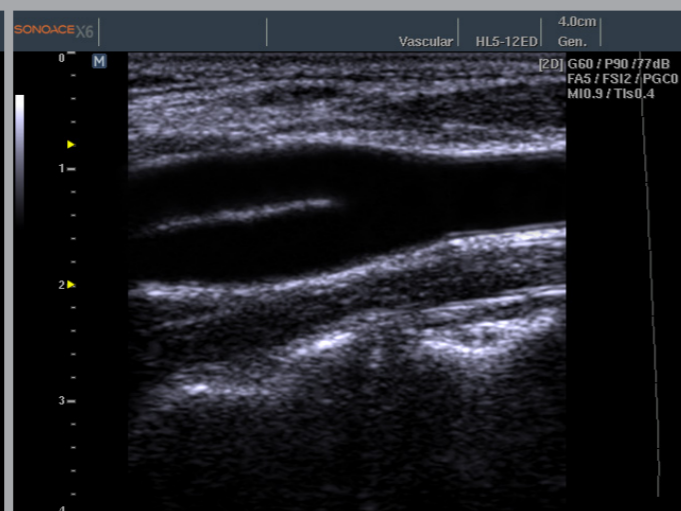
Uterus in 2D



Liver in 2D with SRF™(Speckle Reduction Filter)



Long axis view in 2D



Bifurcation in CCA of 2D



Extreme Power  
in a Compact Design  
**SONOACE X6**